

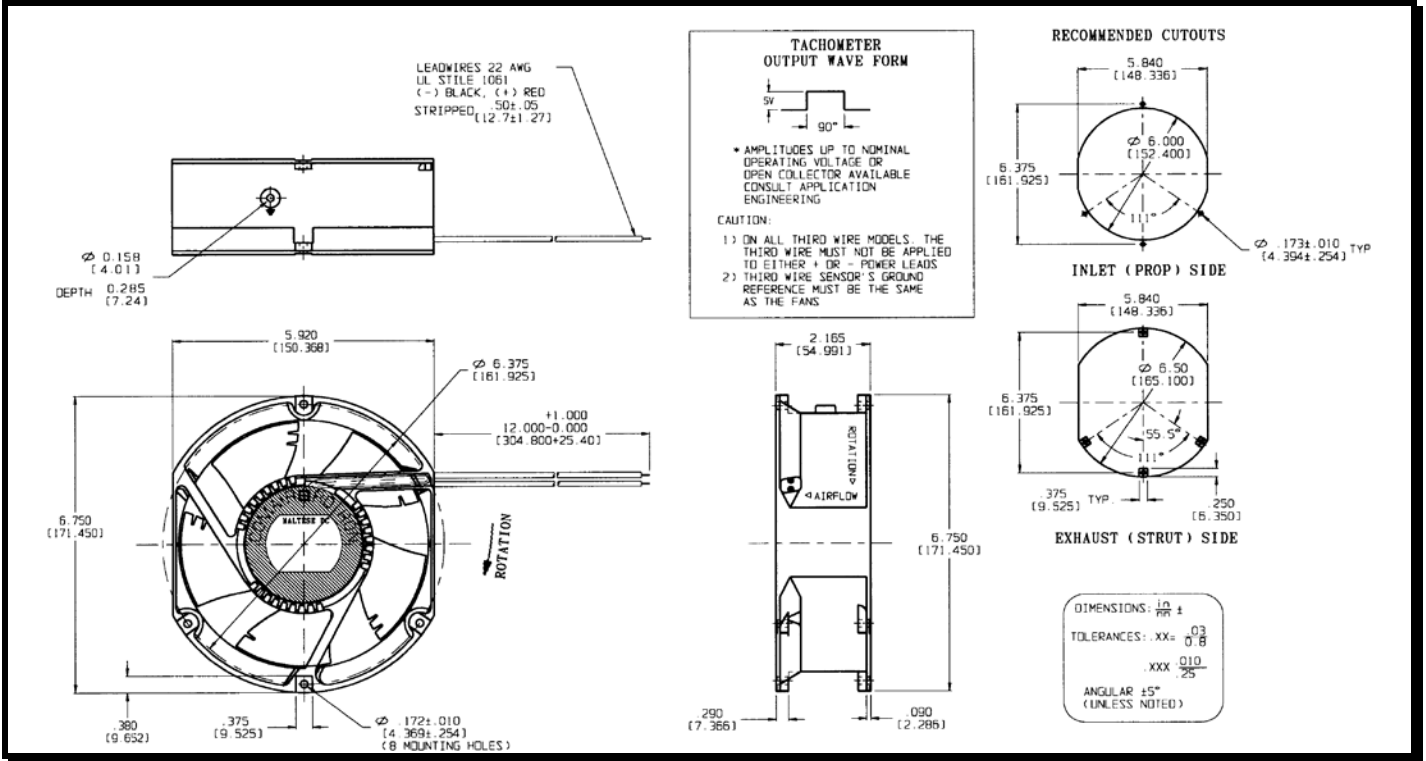
SPECIFICATIONS



Model Number: MTD48U3
Part Number: 17000022A

Version: 00
May 27, 2021

Mechanical Drawing:



Motor:

Nominal Voltage = 48 vdc
 Operating Voltage Range = 36 - 60 vdc
 Nominal Running Current = 1.60 amps
 Max. Locked Rotor Current = 3.0 amps
 Running Power = 76.8watts
 Average Speed = 4650 RPM
 Bearings = ball
 Air Flow = 402 CFM
 Acoustic = 63.9dBA

Construction:

Venturi: Single Piece Die-cast Aluminum, Black.
 Propeller: Plastic, Black, UL 94V-0

Life Expectancy:

This fan is designed for continuous duty life of 76,000 hours at 40°C.

Additional Features:

Brushless DC Motor
 Locked Rotor Protection
 Reverse Polarity Protected
 Automatic Restart Capability
 Operating Temperature: -10°C to 70°C
 Storage Temperature: -40°C to 85°C

Termination:

12"±1" (304.8±25.4mm) 20AWG UL1007 Leadwires
 Red = Power(+)
 Black = Return(-)

Agency Approved:

UL, CUL, CE

PQ Curve:

